



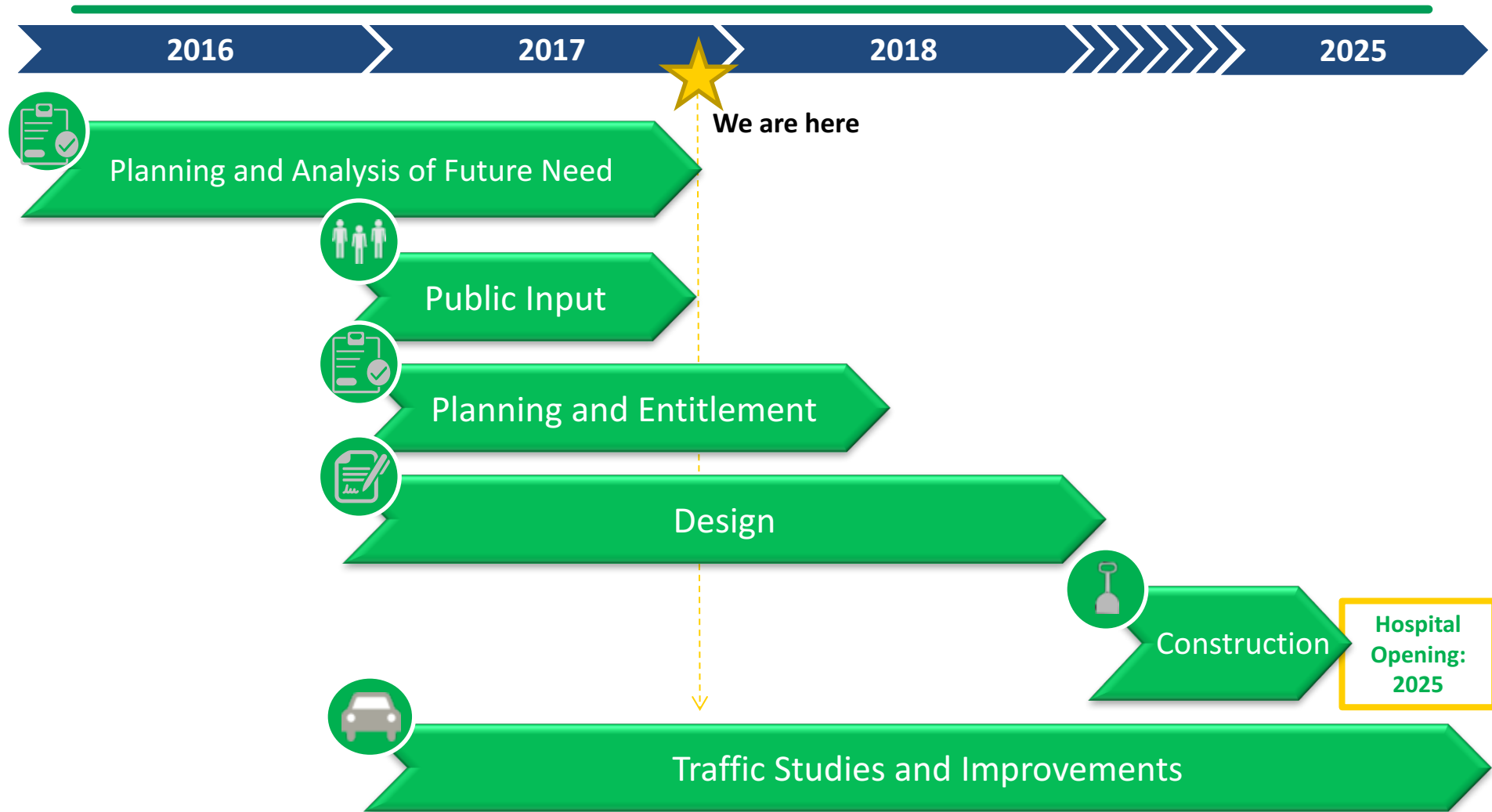
**Children's**<sup>SM</sup>  
Healthcare of Atlanta

---

**BREAKING NEW GROUND**



# North Druid Hills Hospital Timeline



# Community Meeting Series

---



February 22 - Update

March 23 - Hospital

April 20 - Support  
Building

May 24 - Traffic

November 16 - Master  
Plan Update





INTERSTATE 85

CHILDREN'S CENTER FOR ADVANCED PEDIATRICS

CHILDREN'S  
REPLACEMENT SUPPORT  
BUILDING

CLIFF VALLEY  
WAY

CHILDREN'S  
NORTH DRUID HILLS  
CAMPUS

NORTH DRUID  
HILLS RD.

BRIARCLIFF RD. NE



**Children's**  
Healthcare of Atlanta

**BREAKING NEW GROUND**



# The Hope and Will for the North Druid Hills Campus

---

A story about transformation







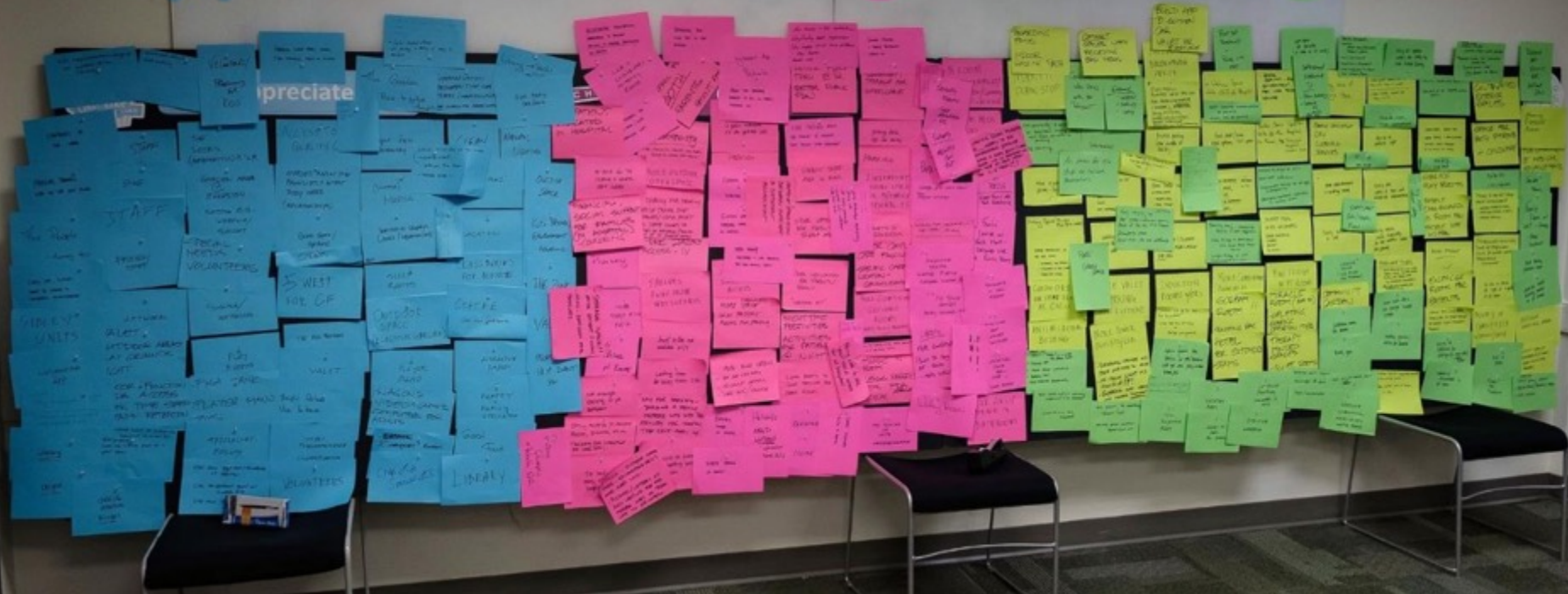


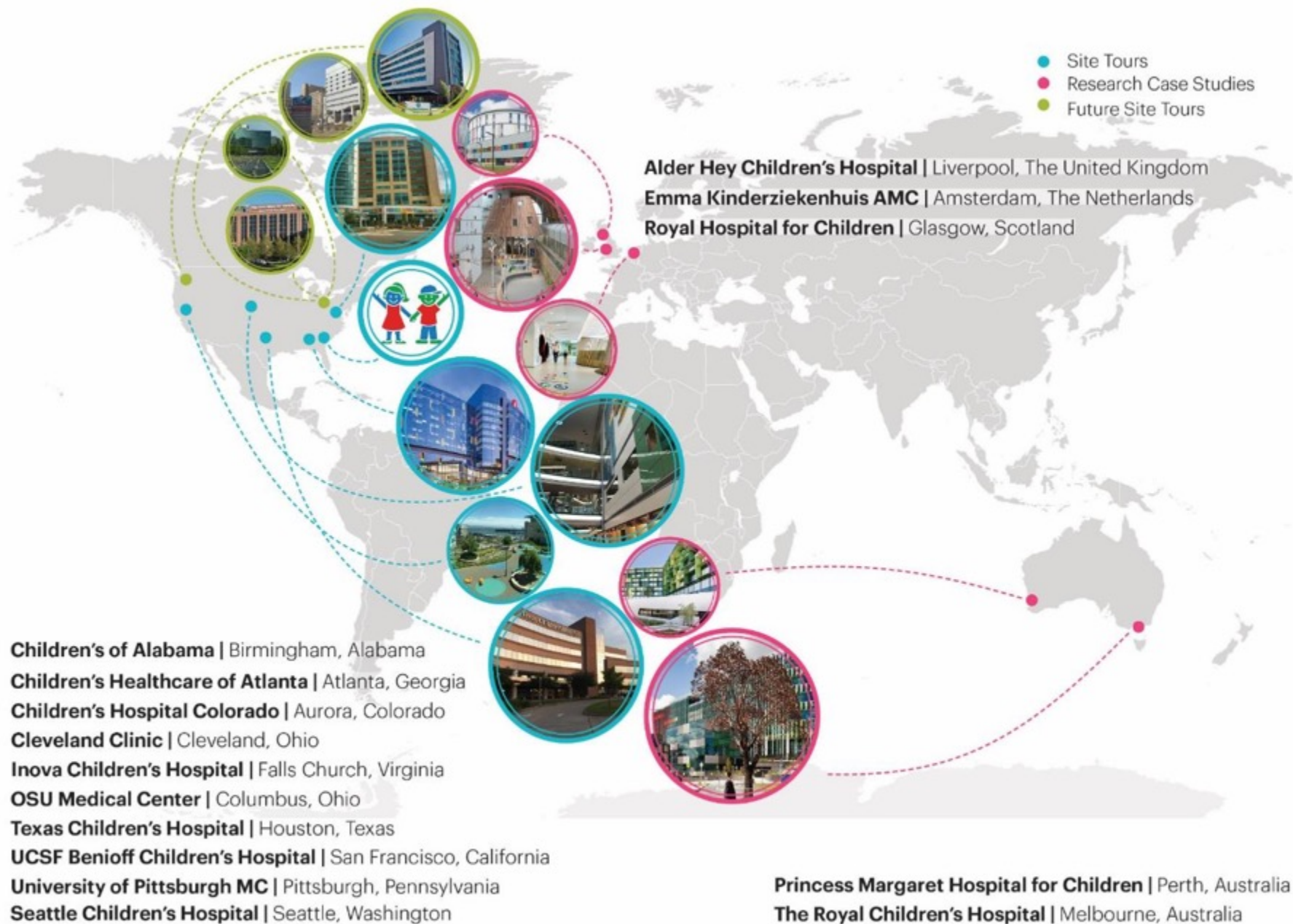


# Appreciate

# Change

# Imagine

















# Connection to Nature

## Access to nature and views



- **8.5%** shorter hospital stays<sup>1</sup>
- Increased pain tolerance
- Reduced stress, blood pressure, and pain
- Saw positive change within **5 minutes** of viewing nature settings<sup>2</sup>

## Access to sunlight



- Patients took **22%** less analgesic medication<sup>3</sup>

## Daylighting



- **30% savings** in energy costs on average by utilizing natural daylight<sup>4</sup>

<sup>1</sup>Ulrich, R. S. (1984) View through a window may influence recovery from surgery Science, Vol. 224.

<sup>2</sup>Brown, D. K., Barton, J. L., & Gladwell, V. F. (2013). Viewing Nature Scenes Positively Affects Recovery of Autonomic Function Following Acute-Mental Stress.

<sup>3</sup>Anjali Joseph, Ph.D., EDAC, Center of Health Design. Top 10 evidence-based design features that improve healthcare outcomes.

<sup>4</sup>Ander, G. (2011, August). Daylighting. Whole Building Design Guide.





# Transformative

---

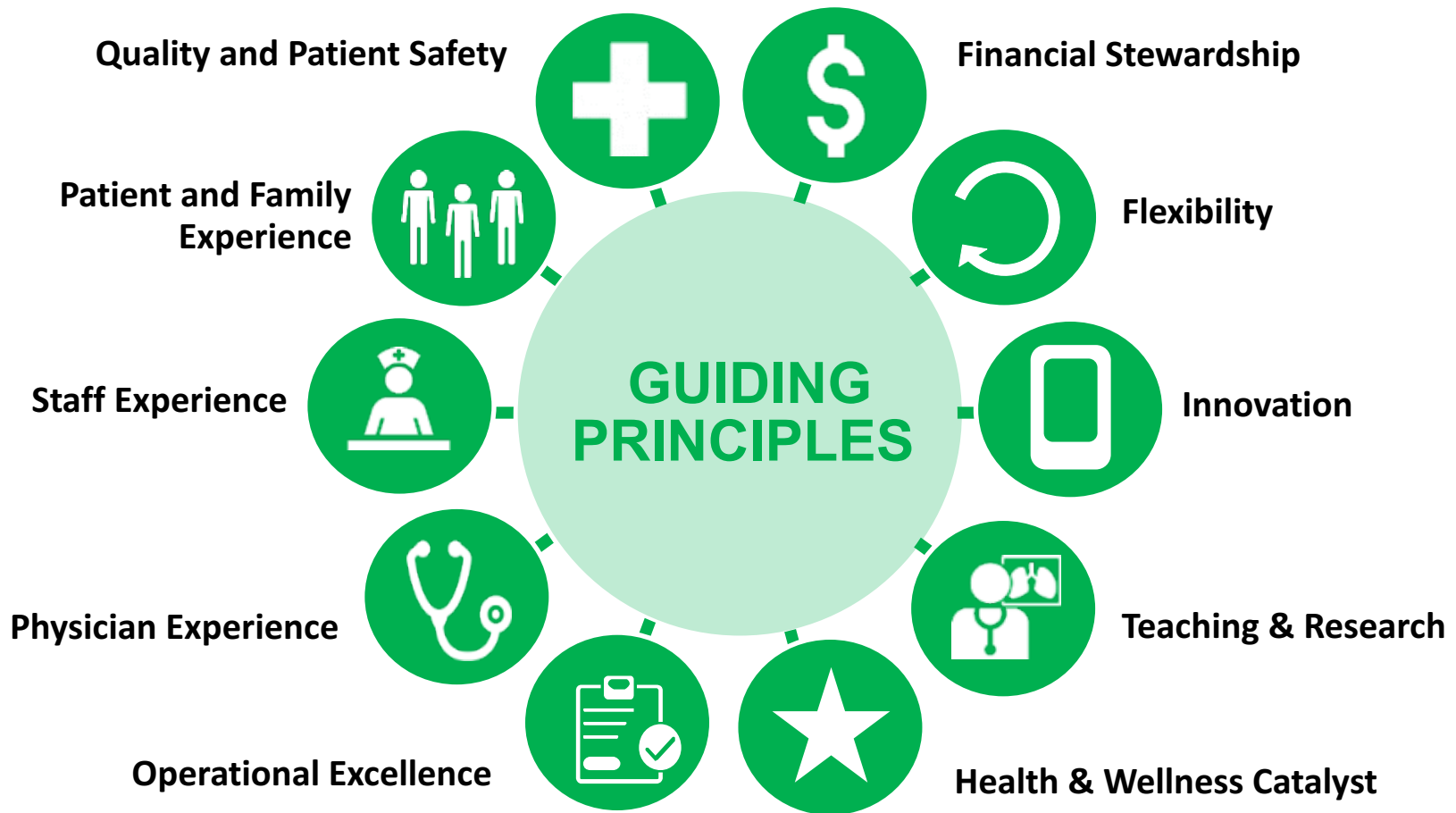






# Framed by guiding principles

---







# Transformative

---































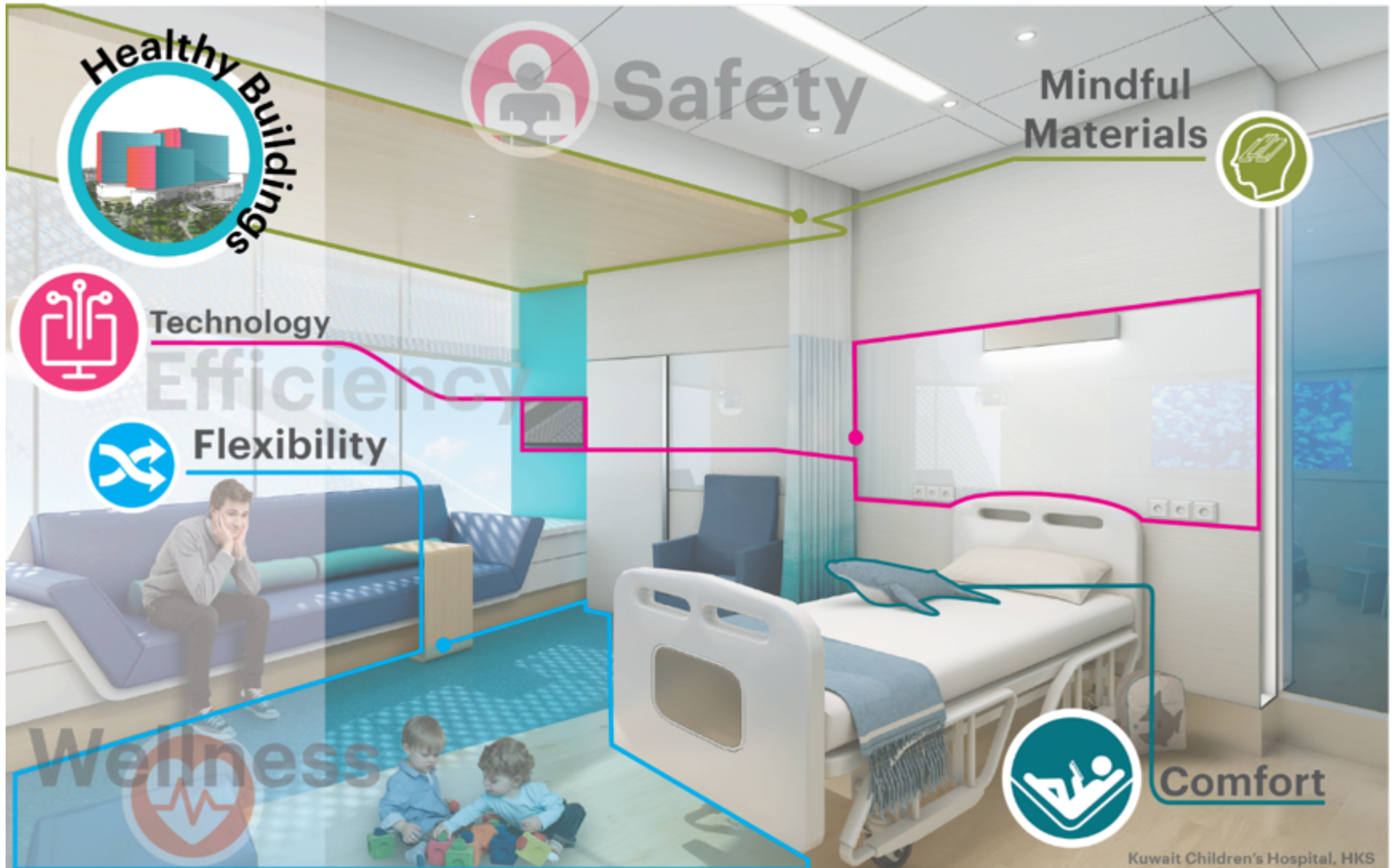


# Transformative

---



# Healthy buildings





# Healthy buildings

---





# Environmental Stewardship

---





# City in a Forest

---





# Transformative

---



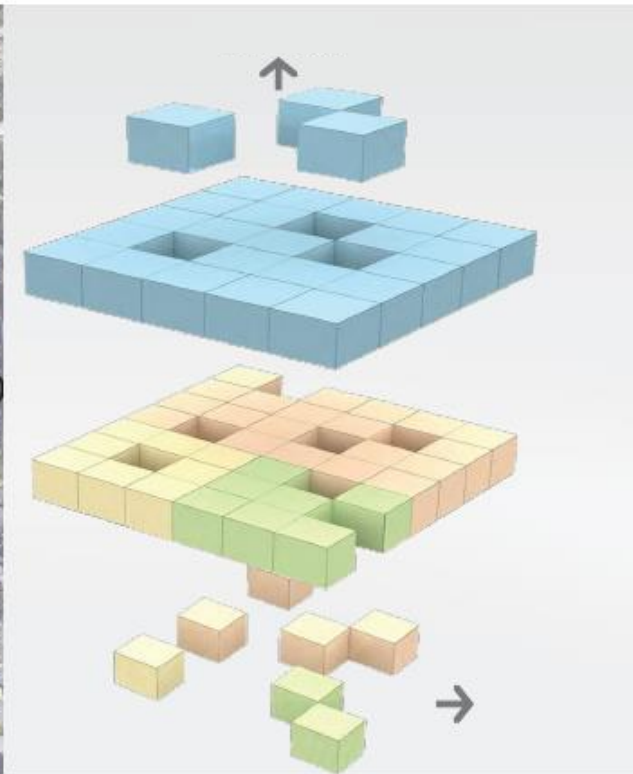


# We are not just designing a hospital, We are designing a catalyst for health.

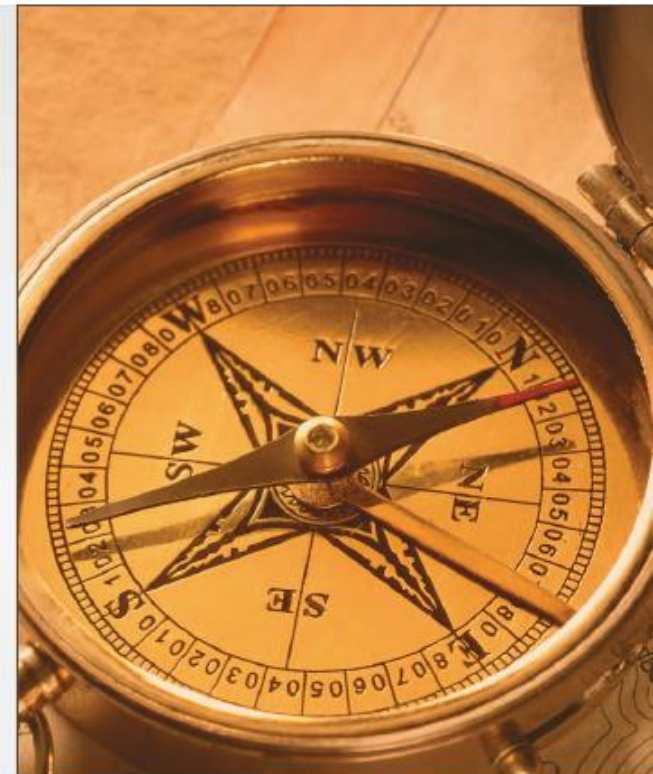
---



**CAMPUS**  
**A CATALYST FOR THE FUTURE**

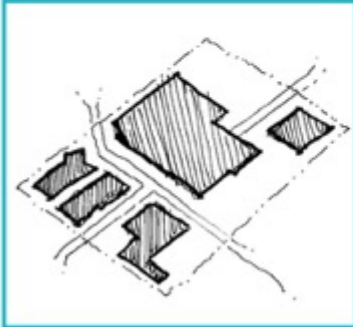
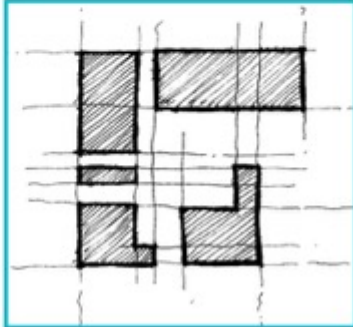
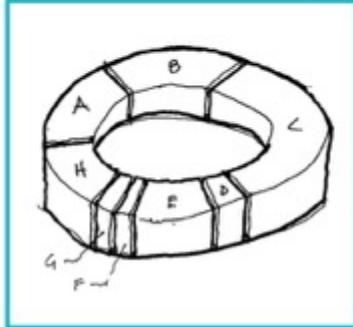
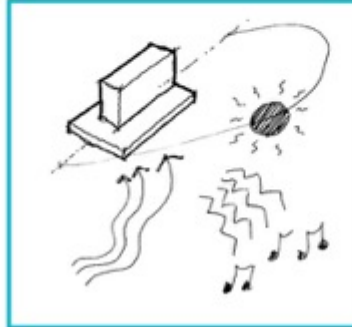
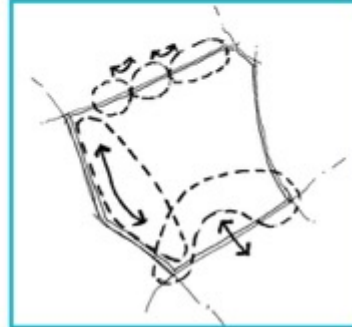

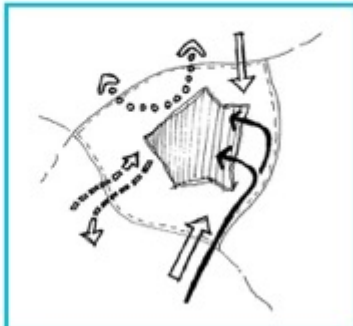
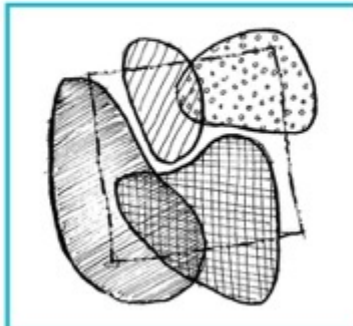
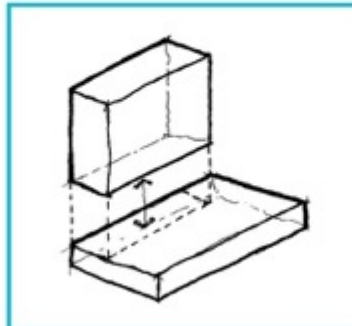
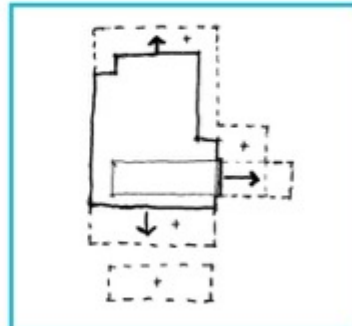


**HOSPITAL**  
**A CATALYST FOR THE FUTURE**

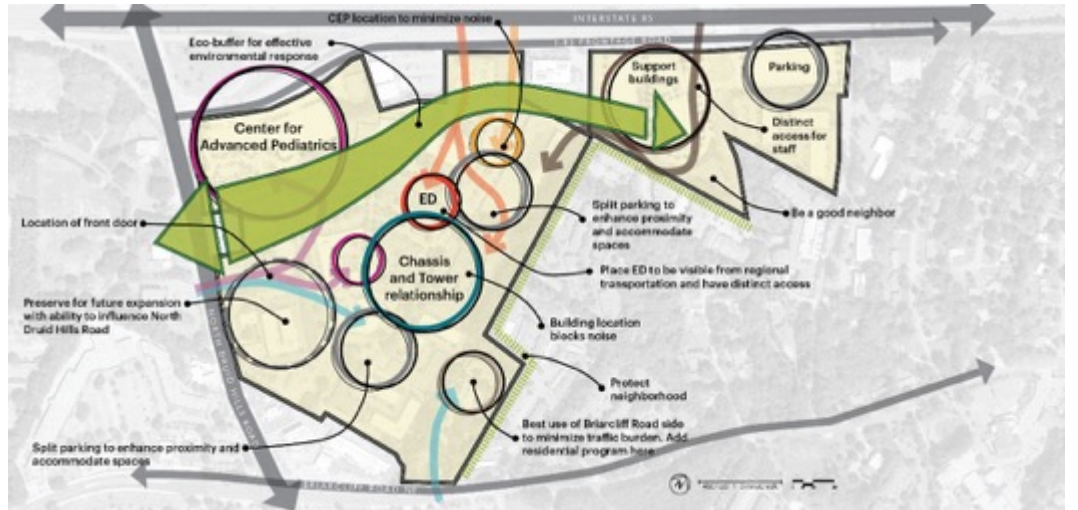
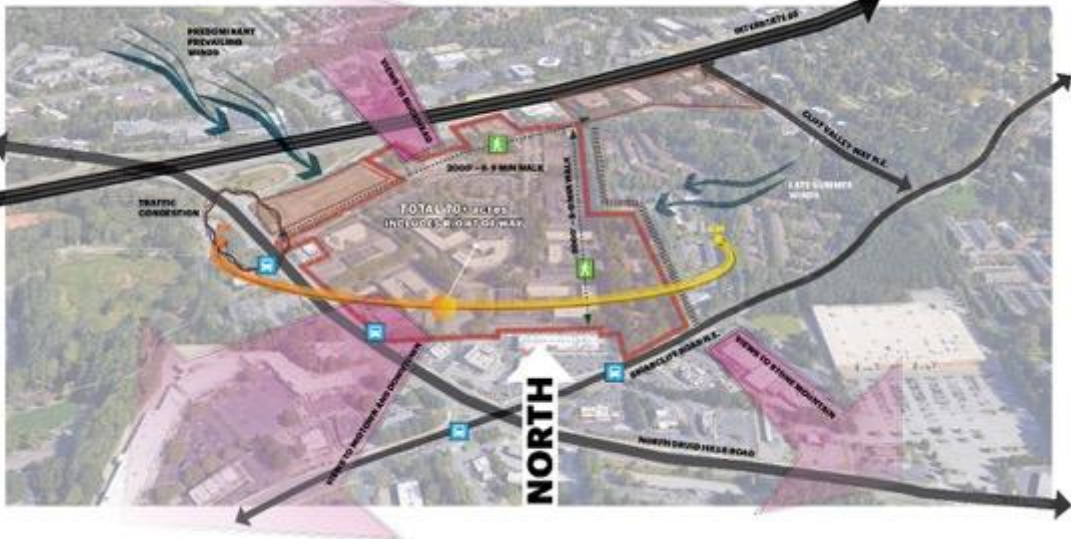


**RESPONSIBLE**  
**DESIGN**

# Project Drivers

<b>01. Capacity</b> Land expanse and potential 	<b>02. Pattern</b> Arrangement and layout 	<b>03. Program</b> Project components 	<b>04. Environmental Conditions</b> Wind, Sun, Noise, Topography 	<b>05. Edge Response</b> I-85 Frontage road, Residential, Briarcliff road and North Druid Hills road 
<b>06. Open Space</b> Character and configuration of open spaces 	<b>07. Circulation</b> Access & movement: Public, ambulance, staff and service 	<b>08. Zones</b> Public vs. Service vs. Staff 	<b>09. Building Organization</b> Podium and Tower relationship 	<b>10. Growth</b> Expansion, flexibility and scale 





# Master Plan 2026

---



---

**BREAKING NEW GROUND**



# Site Plan at 2026





# Bird's Eye View at 2026

---



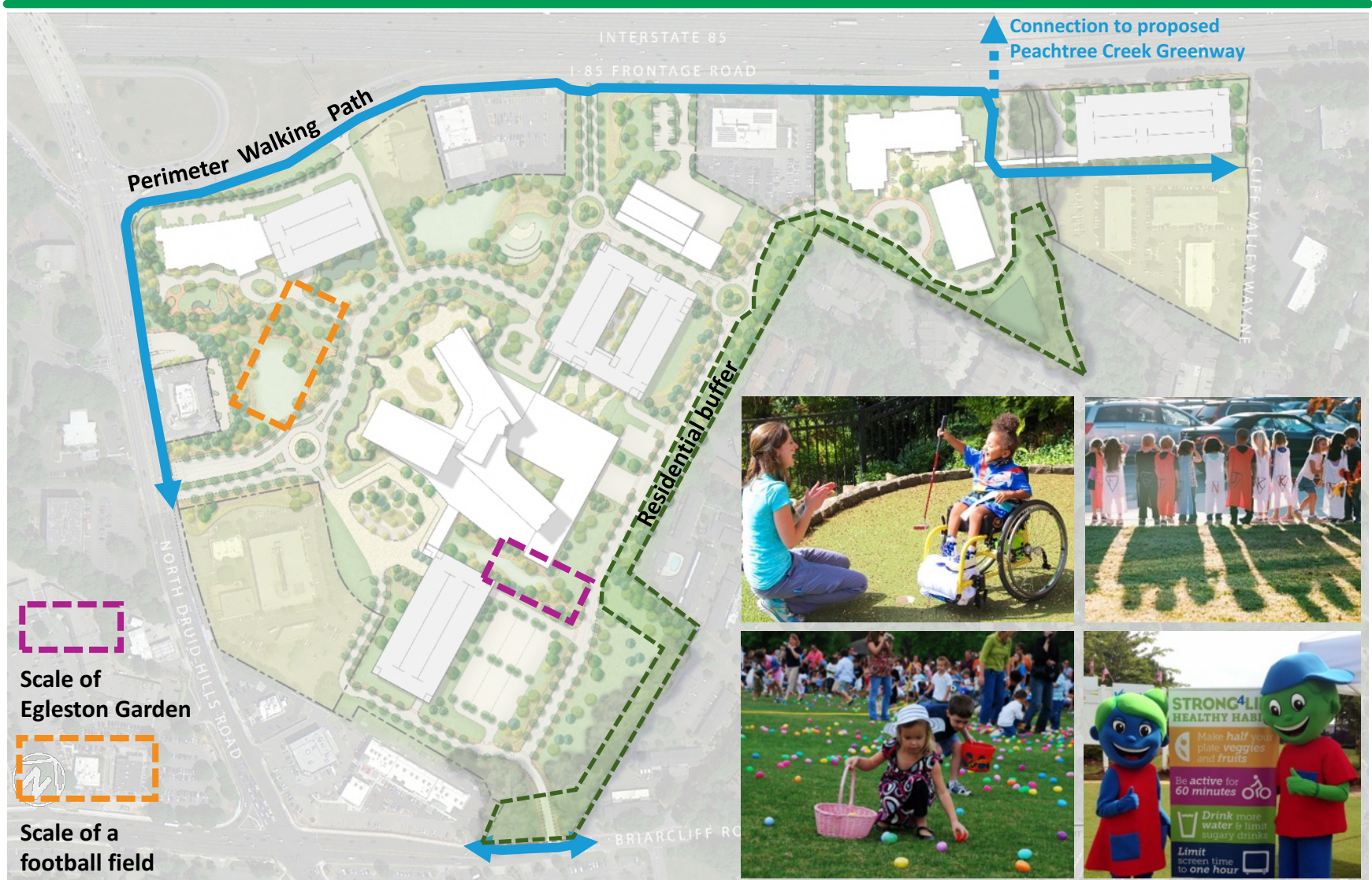


# Site Details

---

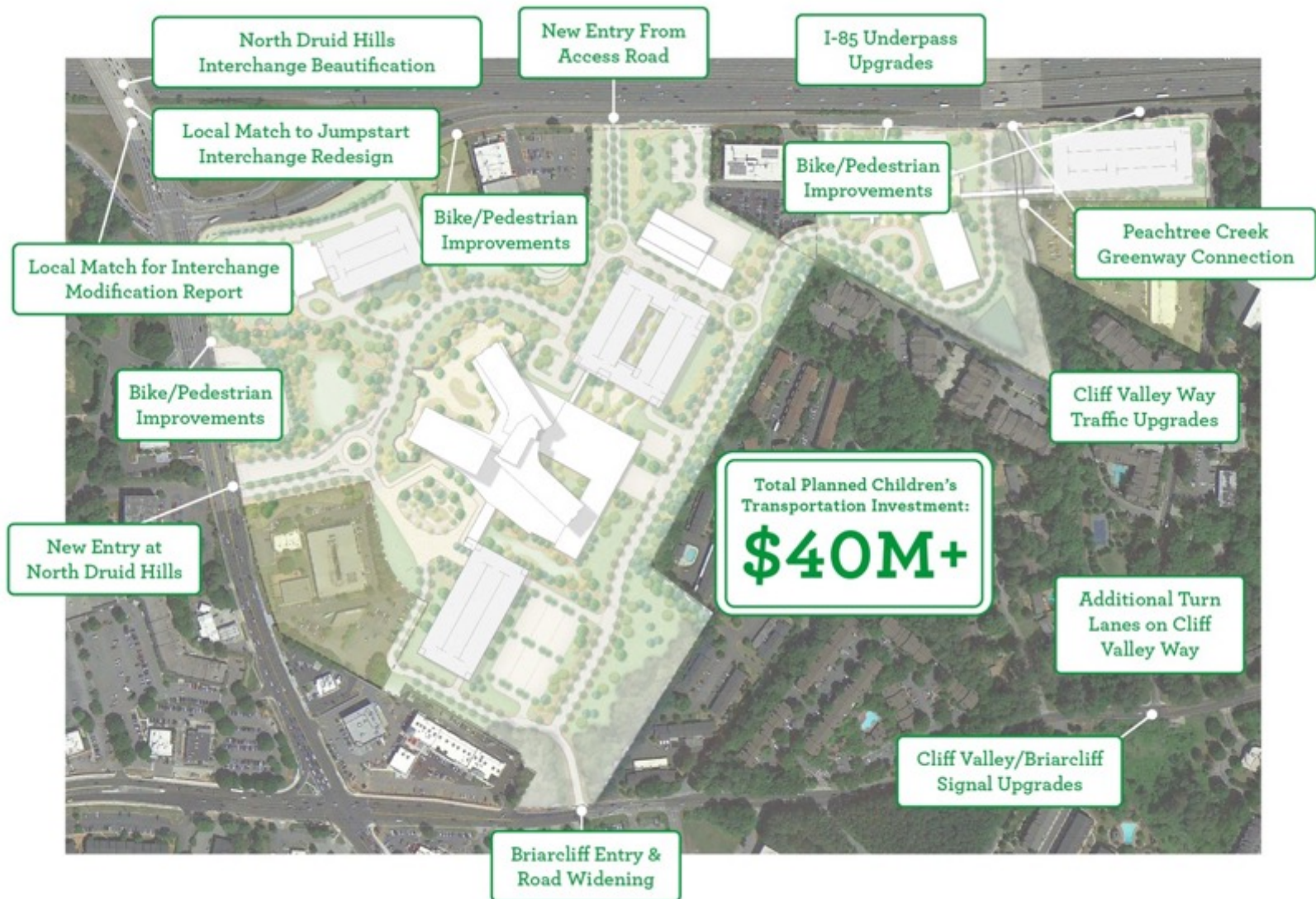


# 20+ Acres of Greenspace and Connectivity





# Children's as a Transportation Catalyst



# Next Steps

---



---

**BREAKING NEW GROUND**



# Entitlement Process

Nov. 13

Nov. 20

Nov. 27

Dec. 4

Dec. 11

Dec. 18

Dec. 25

1Q 18

▲ 11/16

## Public Meeting

- Children's shares preliminary master plan with public

▲ 12/06

## Brookhaven Planning Commission Meeting

- Presentation of Master Plan
- Vote on annexation and zoning for Support Building
- First hearing on text amendment

▲ 12/12

## Brookhaven City Council Meeting

- Vote on annexation and zoning for Support Building
- Vote on text amendment

▲ 12/20

## Board Zoning Appeals

- Vote on variances for Support

▲ 1Q 18

DRI Submittal



# www.choa.org/breakingnewground

Secure | https://www.choabreakingnewground.org

[Welcome](#)[Future Plans](#)[News](#)[Stay Informed](#)[Donate +](#)

## Stay Informed

We will engage with our partners, the community and government leaders during the development of specific plans. Review common questions, submit a new question and check back for updates below.

### Common Questions

What will the new campus offer?



How many beds will Children's have once the new campus is complete?



Where will the hospital be located?



What improvements is Children's making to its other facilities?



What will happen to Egleston's campus?



### Have a Question?

If your question is not answered here, please let us know. We will update our Common Questions regularly.

**SUBMIT QUESTION**

### Upcoming Meetings





**Children's**<sup>SM</sup>  
Healthcare of Atlanta

---

**BREAKING NEW GROUND**

